

# FORT COLLINS INTERAGENCY WILDFIRE DISPATCH CENTER AND AVIATION SERVICE CENTER

## *2005 ANNUAL REPORT*



### *ARAPAHO-ROOSEVELT NATIONAL FORESTS AND PAWNEE NATIONAL GRASSLAND*

*Prepared by: Karen Fear (Acting Center Manager), Mark S. Nelson (Former Center Manager) and Pete Cadmus*

*COMBINED REPORT: Agency specific information may need to be extrapolated.*



Helitanker 736 dipping from Bellaire Lake while working the North Bald Incident.

**FTC WEBSITE:** <http://www.fs.fed.us/arnf/fire/fire.html>

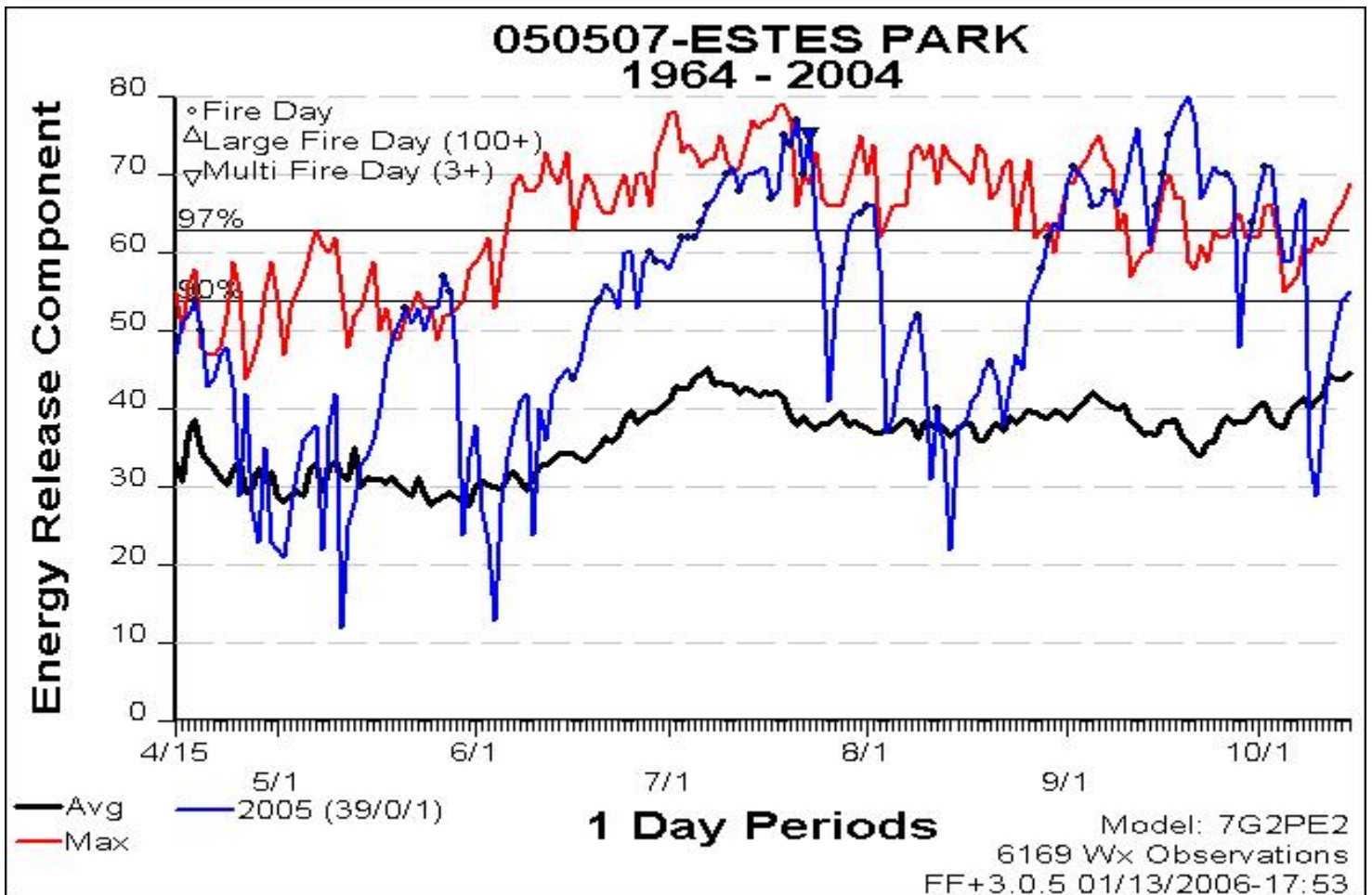
# FORT COLLINS INTERAGENCY WILDFIRE DISPATCH CENTER AND AVIATION SERVICE CENTER *2005 ANNUAL REPORT*

## 2005 FTC NARRATIVE/SUMMARY:

### *Weather/Seasonal Severity:*

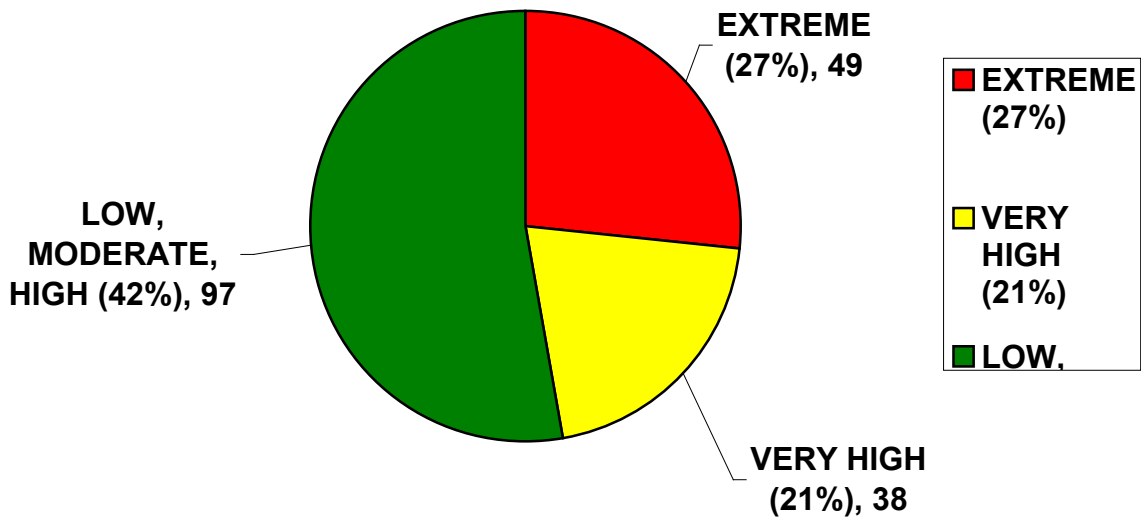
The drought is still showing up in some areas. The water year from October, 2004 to September, 2005, showed between 74% to 122% of average for the Northern Front Range. Most areas in the higher elevations were in the 90% range. July, 2005 set records for high temperatures along the Front Range. The Denver/Boulder National Weather Service summarized July, 2005, as the second hottest, and the third driest since 1872.

**2005 fire season representative ERC chart for the Estes Park weather station**



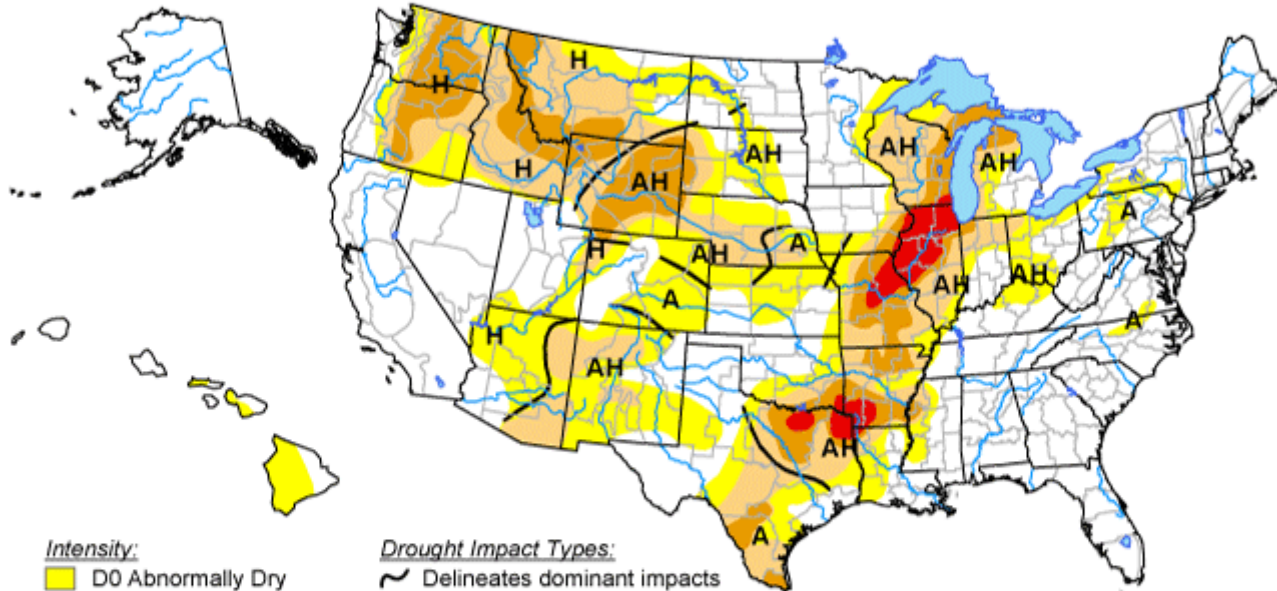
Of the established April 15<sup>th</sup> through October 15<sup>th</sup> fire season (184 days); there were 38 days (21% of fire season) spent above the Very High fire danger rating and 49 days (27% of fire season) spent above the Extreme fire danger level. An average annual fire season would have 18 days (10%) at or above the Very High Fire Danger level and 5-6 days (3%) in the extreme fire danger level (See chart on next page).

**2005 FIRE DANGER DAYS BY CLASS**  
 (Fire Season of April 15th-October 15th = 184 Days)



# U.S. Drought Monitor

July 26, 2005  
 Valid 8 a.m. EDT



**Intensity:**

- D0 Abnormally Dry
- D1 Drought - Moderate
- D2 Drought - Severe
- D3 Drought - Extreme
- D4 Drought - Exceptional

**Drought Impact Types:**

- Delineates dominant impacts
- A = Agricultural (crops, pastures, grasslands)
- H = Hydrological (water)
- (No type = Both impacts)

The Drought Monitor focuses on broad-scale conditions. Local conditions may vary. See accompanying text summary for forecast statements.

<http://drought.unl.edu/dm>



Released Thursday, July 28, 2005

Author: C. Tankersley/J. Enloe, NOAA/NESDIS/NCDC

**Initial Attack:** Initial attack activity along the Northern Front Range was a little above average in occurrence. Acres burned were below average (most acres were the result of an escaped prescribed fire on the Pawnee National Grasslands. (See below).

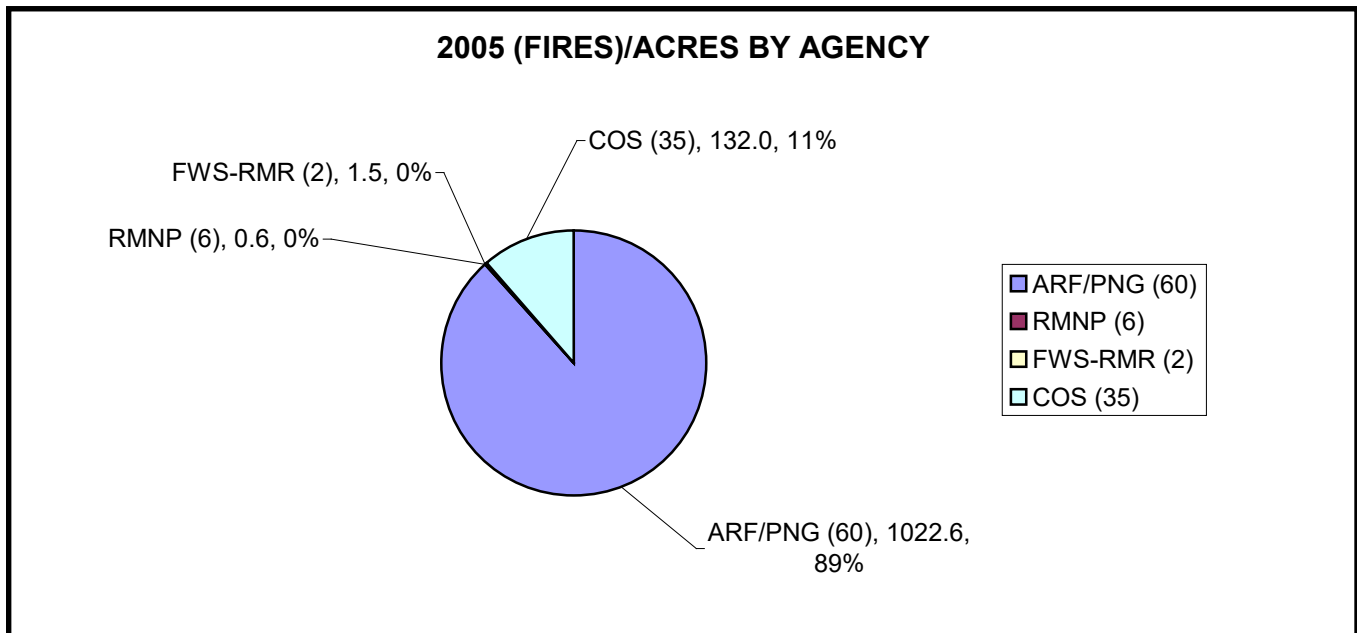
**Christensen Search:** FTC supported Rocky Mountain National Park in Search and Rescue efforts for Ranger Jeff Christensen. FTC Provided Aviation, Overhead, and Equipment and Supply support. See last page for “End of Watch” report on Ranger Christensen.

**Regional Support:** Regional support was average. The same weather patterns that affected the Northern Front Range also influenced most of the Rocky Mountain Region.

**National Support:** Besides supporting wildland fires, other activities were supported including hurricane support for Katrina and Rita. Resources were sent to the following states in 2005 (Alaska, Arizona, Colorado, Florida, Georgia, Idaho, Louisiana, Mississippi, Montana, New Mexico, Nevada, North Carolina, Oregon, South Dakota, Texas, Utah, Washington DC, and Wyoming.

**2005 NORTHERN FRONT RANGE INTERAGENCY FIRE OCCURRENCE/ACRES:**

The Northern Front Range Interagency Wildfire Cooperators experienced a total of 103 wildfires for a total of 1,155 acres burned. The Interagency breakdown of number of fires (in parentheses) and acres burned are shown in the following chart (does not include the state stats for agricultural/grass fires in Northeast Colorado counties). The stats reported in this document are only for fires that received an FTC incident number or impacted resource allocation within a county that has a County Annual Operating Plan. State and private statistics are available from the Colorado State Forest Service.

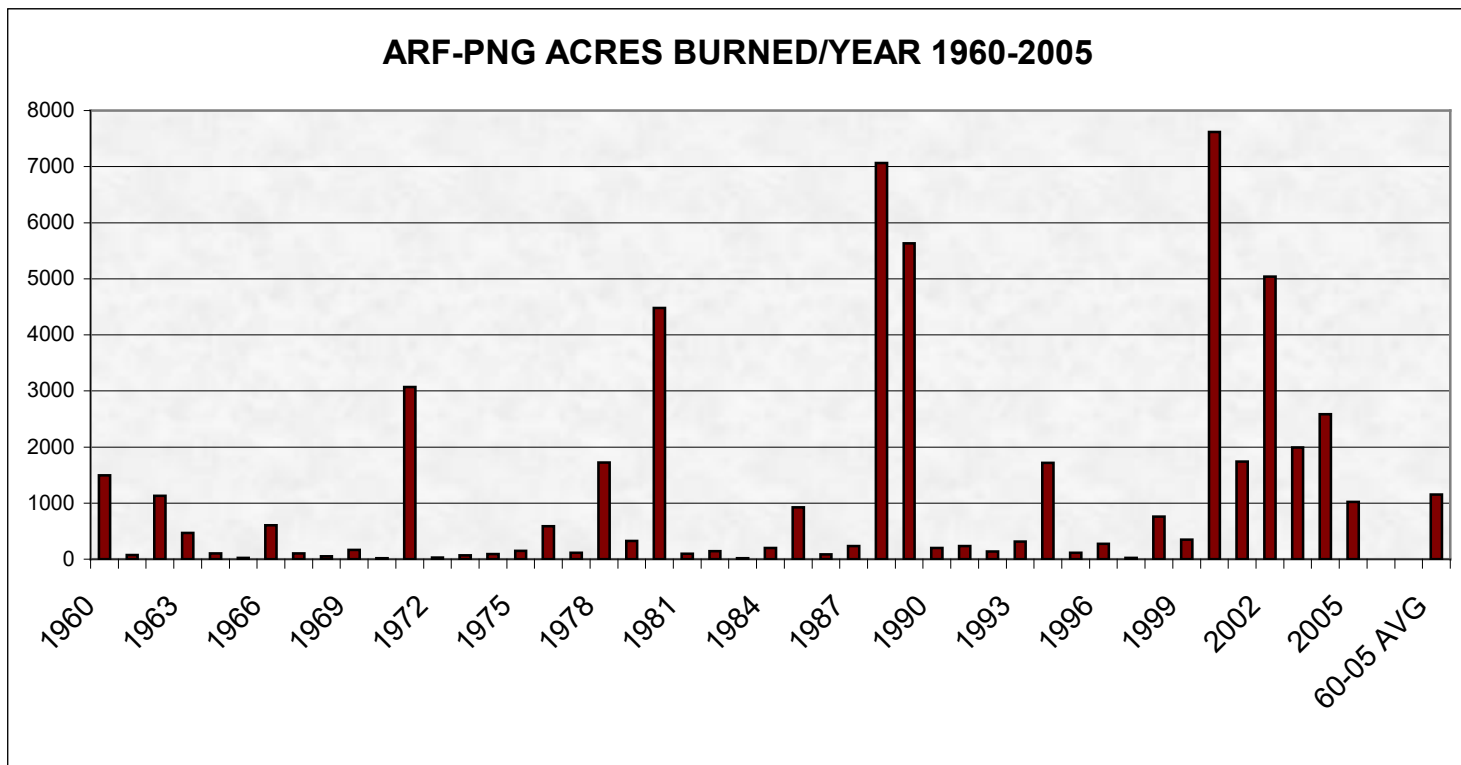
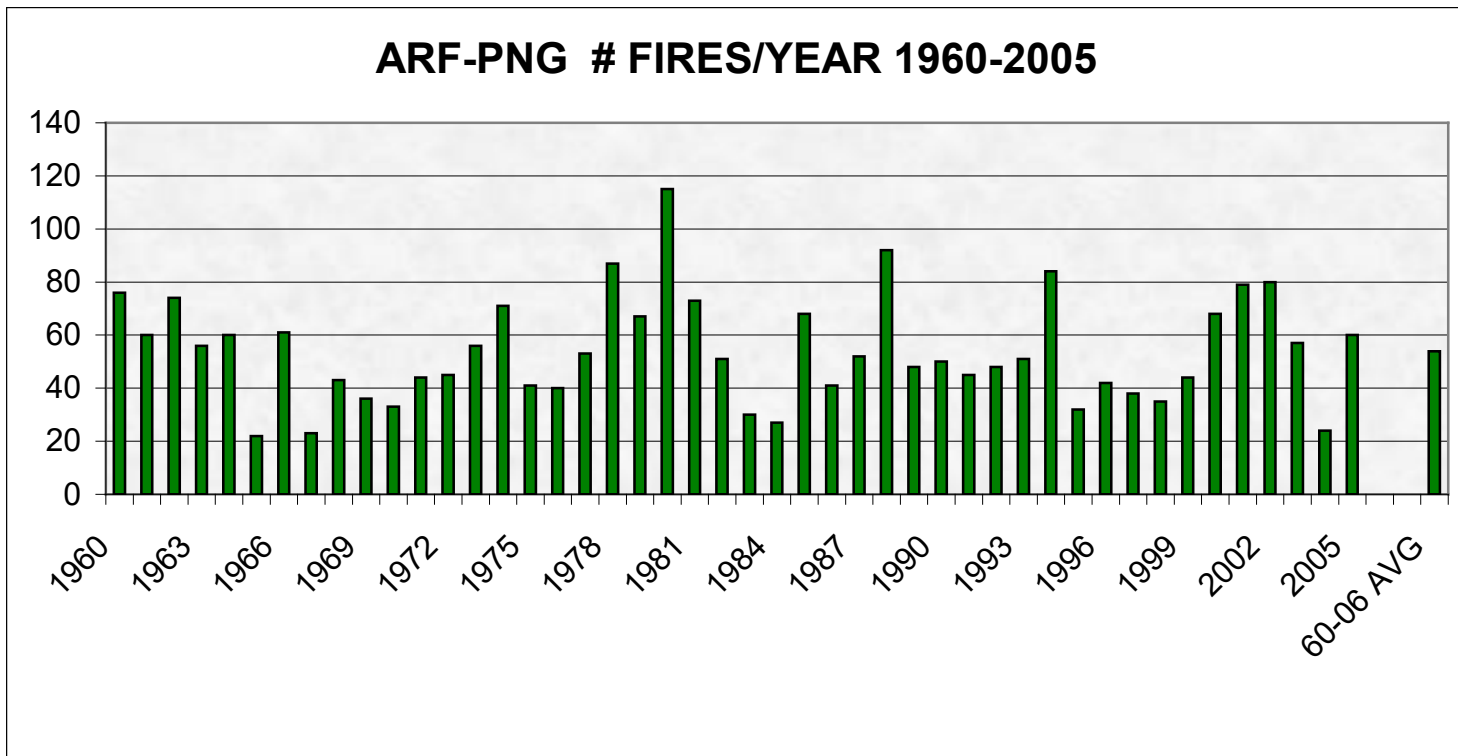


COS Includes: Larimer (LRX), Boulder (BLX), Gilpin (GPX) and Clear Creek (CCX) Counties

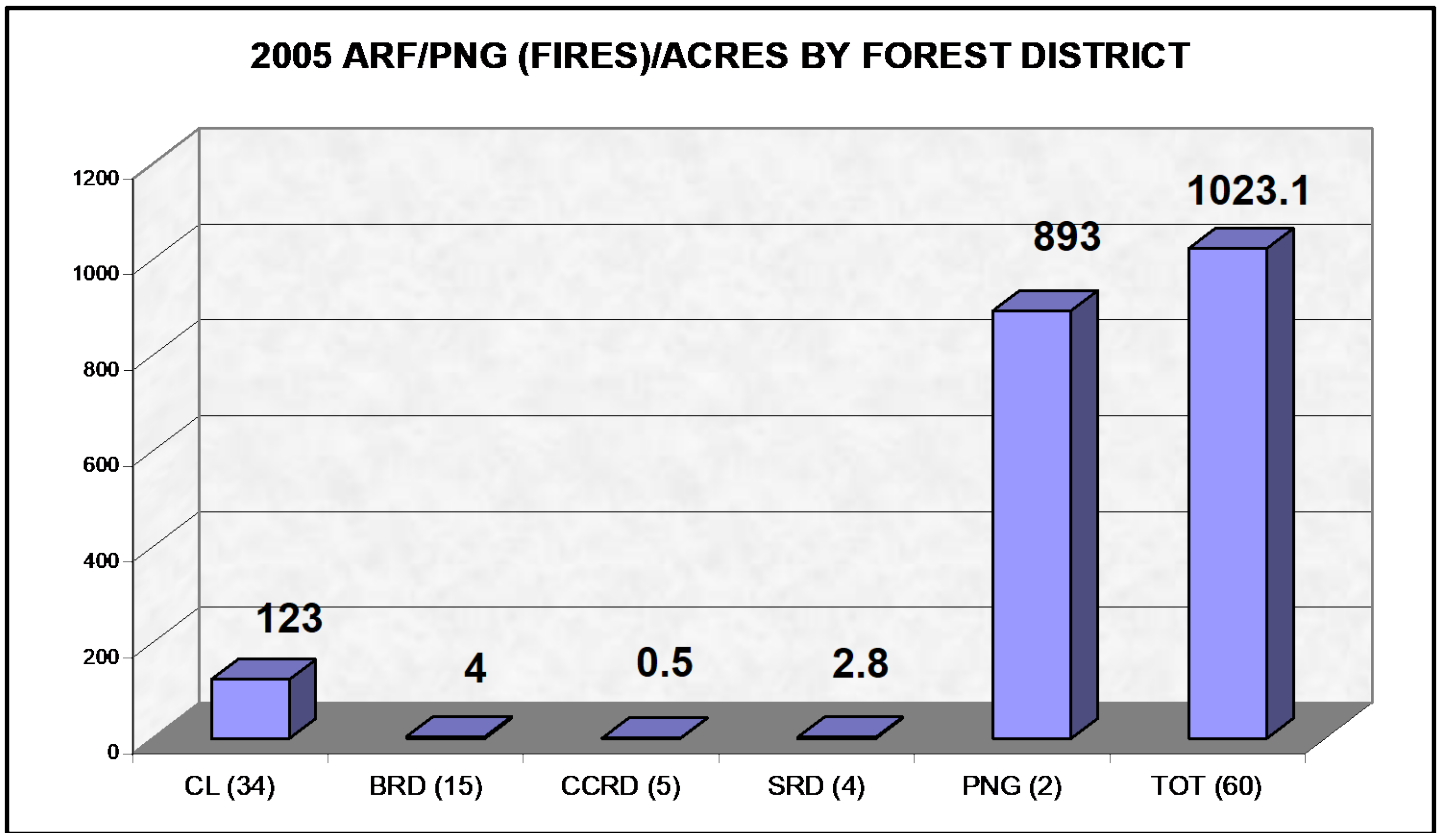
**2005 ARAPAHO-ROOSEVELT N.F./PAWNEE N.G. FIRE OCCURANCE/ACRES:**

The Arapaho-Roosevelt National Forests and Pawnee National Grassland experienced 60 fires for a total of 1,023 acres burned (USFS acres only). Most of the acres burned (850) were the result of the Klingensmith escaped prescribed fire on the Pawnee National Grasslands. Of the 60 fires, 26 fires (43%) were human-caused for 895 acres. 34 fires (57%) were lightning-caused for 128 acres. The following bar graphs show the fire occurrence and acres burned from 1960 thru 2005 for the Arapaho-Roosevelt National Forests and Pawnee National Grassland. Historical records for the interagency cooperators are not available.

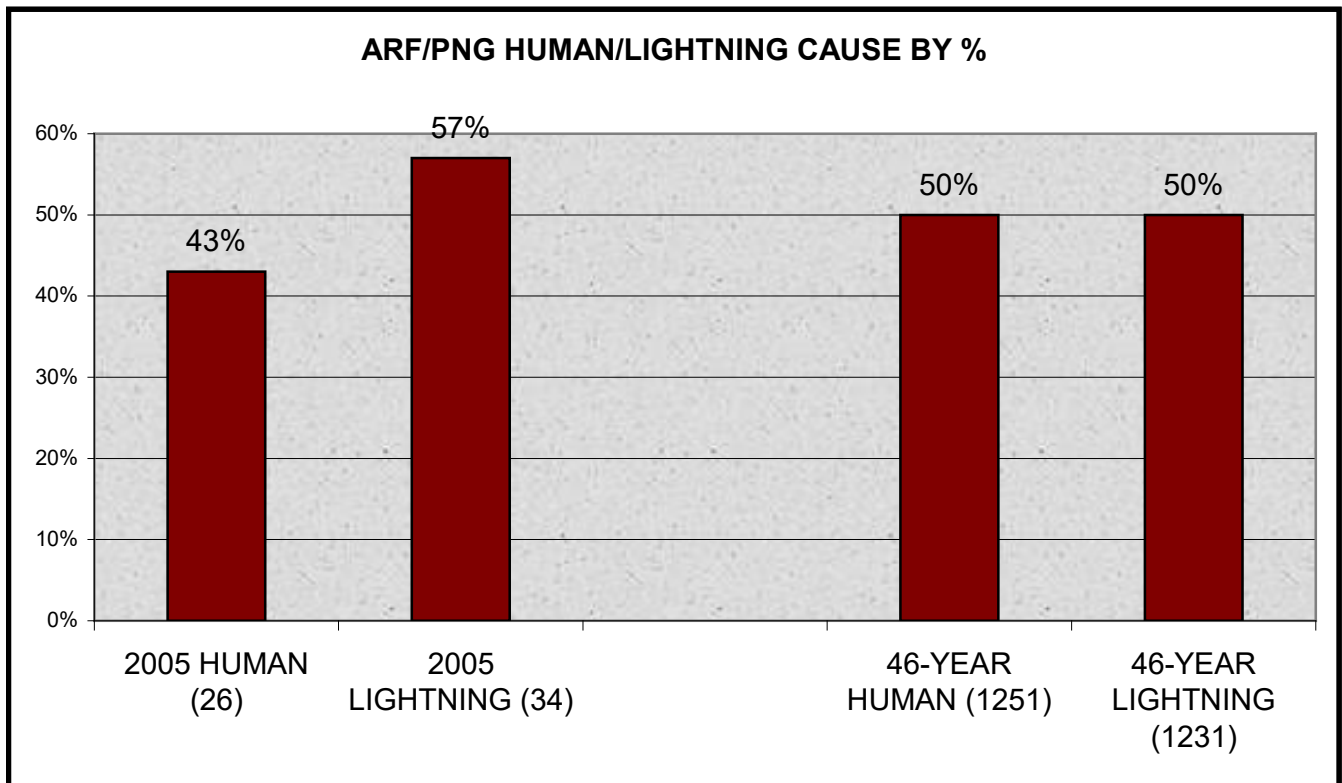
- The 46-year historical average annual fire occurrence and acres burned is: 54 fires for 1,160 acres/year.
- The five-year average annual is: 60 fires for 2,477 acres per year.
- The ten-year average annual is: 53 fires for 2,141 acres per year burned.
- There have been a total of 2,482 fires for 53,373 acres burned from 1960 through 2005 (46 Years).



The following chart shows the 2005 distribution of (fires) and acres burned by ARNF/PNG district.

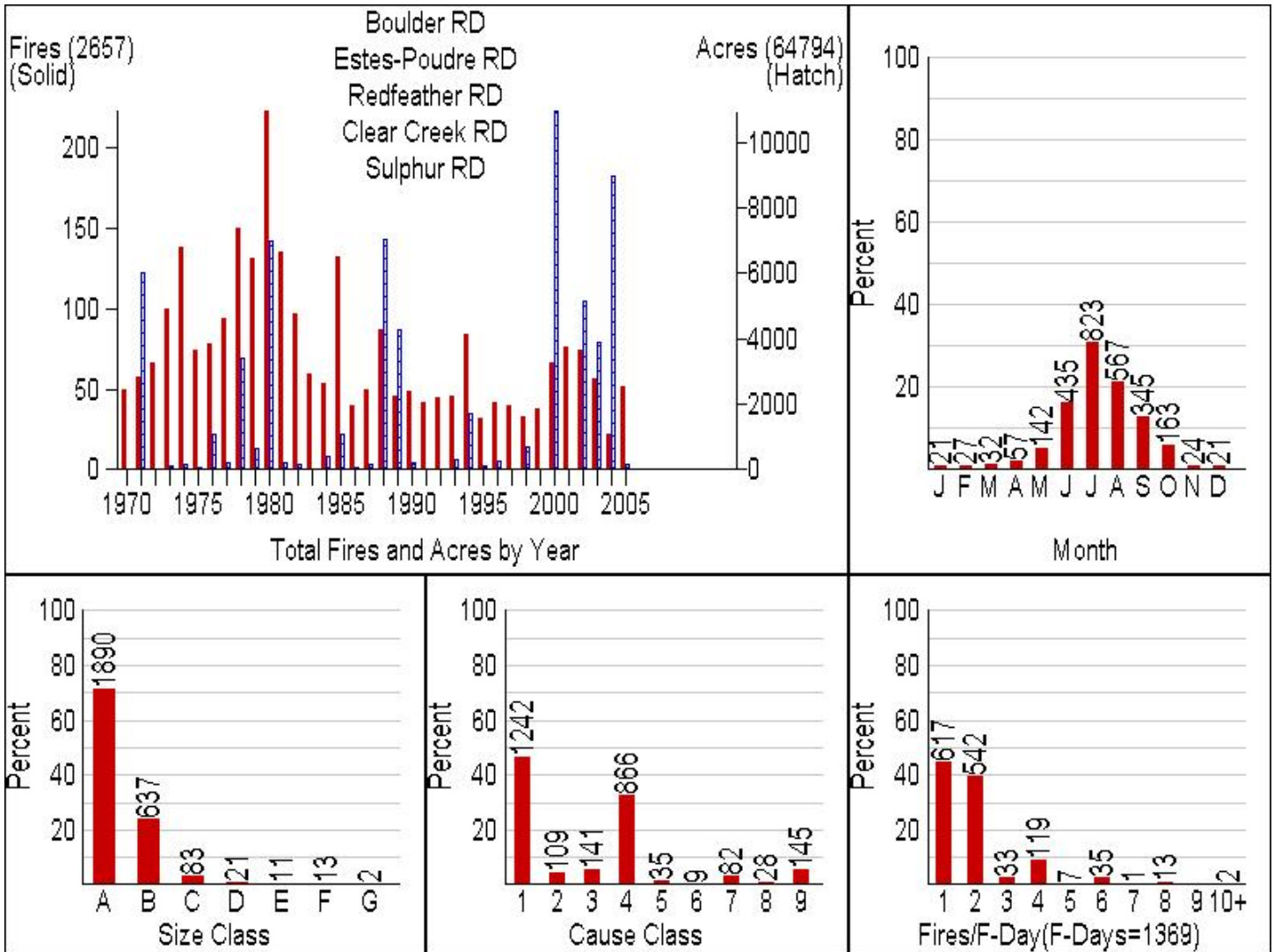


The following chart shows ARNF/PNG fire cause (Human Vs Lightning)  
For 2005 compared to 46-year average.



**The follow series of charts are a compilation of fire records from 1970 to 2005:**  
 (Does not include Pawnee National Grassland fires)

- The first chart shows fires and acres burned each year (*Includes Non-forest Service acres*).
- Fire occurrence by month (Fire Season).
- Fires by size class: (A: 0-.25) (B: .25-10) (C: 10-100) (D: 100-300) (E: 300-1,000) (F: 1,000-5,000) (G: 5,000+)
- Fires by cause: (1=Lightning) (2=Equipment) (3=Smoking) (4=Campfire) (5=Debris) (6=Railroad) (7=Arson) (8=Children) (9=Miscellaneous)
- Fires per day.

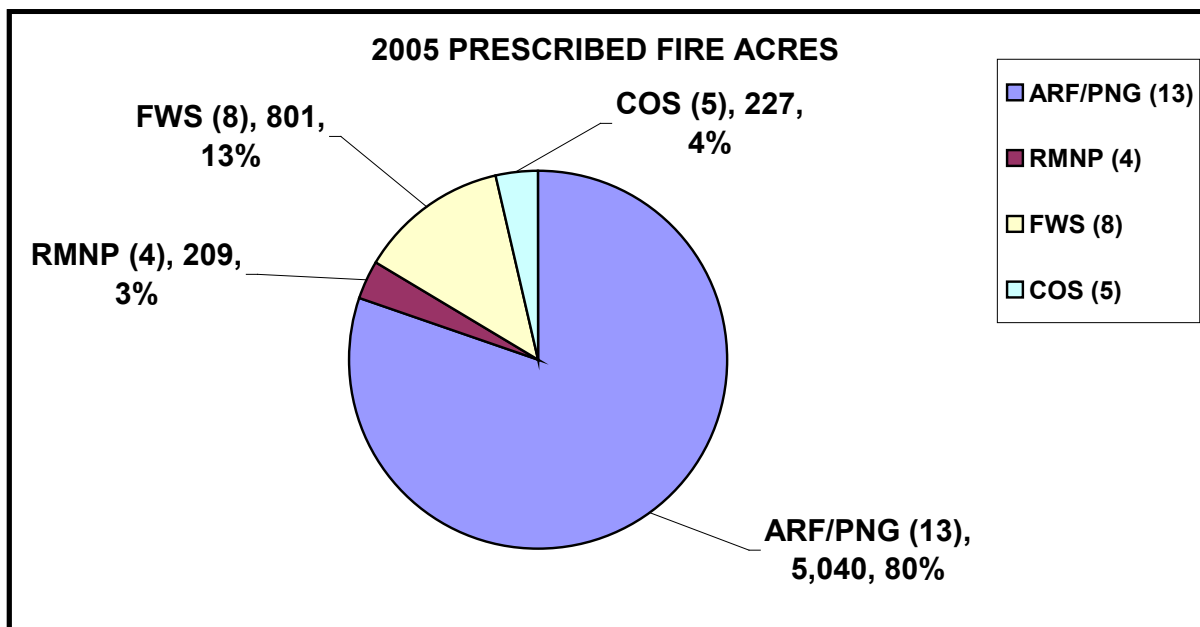


**ARF/PNG LARGE FIRE HISTORY 1960-2005 (300+ ACRES GRASS/100+ ACRES TIMBER):**

YEAR	UNIT	FIRE NAME	ACRES	H/L	YEAR	UNIT	FIRE NAME	ACRES	H/L
1960	PNG	RENO	606	H		BRD	CANYON	2,471	H
1960	PNG	TOEDTLI	660	L	1988	RFRD	SWAN	200	L
1962	CCRD	REST HOUSE	1,007	H	1988	BRD	BLACKTIGER	1,804	H
1962	RFRD	ROACH	748	H	1989	RFRD	MOBERLY	364	L
1962	EPRD	PALISADE	140	H	1989	RFRD	LIVERMORE	1,967	L
1966	EPRD	COMANCHE	470	H	1989	RFRD	EATON RES.	100	H
1968	CCRD	LINCOLN	740	L	1989	PNG	HORSETAIL	1,283	H
1971	RFRD	BULL MTN.	2,635	H	1989	RFRD	GOODELL	141	L
1971	RFRD	LOOKOUT	124	L	1990	EPRD	SNOWTOP	275	L
1971	RFRD	SKYLINE	210	H	1993	EPRD	HOURLASS	1,221	L
1976	BRD	COMFORTER	256	H	1994	EPRD	EGGERS	370	L
1976	RFRD	ANSEL #2	250	H	1994	EPRD	CRYSTAL	370	L
1978	CCRD	RESERVOIR	400	H	1996	RFRD	GREYROCK	130	H
1978	RFRD	KILLPECKER	1,200	H	1998	CCRD	BEAR TRACK	477	H
1979	EPRD	PIERSON PARK	312	H	1998	CLRD	BOBCAT GULCH	10,599	H
1980	SRD	M.SUPPLY CK.	477	H	2000	PNG	SPRING	1,268	H
1980	RFRD	BEARTRAP	2,734	H	2001	CLRD	PREVENT	190	H
1980	EPRD	YOUNG GULCH	180	H	2002	CLRD	HEWLETT GULCH	500	H
1980	PNG	KLINGENSMITH	1,000	L	2002	CLRD	BIG ELK	4,348	H
1985	RFRD	GREYROCK	235	L	2002	BRD	OVERLAND	3,400	H
1985	PNG	McGREW	310	L	2003	CLRD	PICNIC ROCK	8,908	H
1988	RFRD	GRACE CK.	2,800	H	2004	PNG	KLINGENSMITH	850	H
1988	BRD	BEAVER LK.	757	H	2005				

**2005 PRESCRIBED FIRE ACCOMPLISHMENTS:**

Not all the numbers for prescribed burns are available as of 12/21/2005 from the State and counties. The Arapaho-Roosevelt National Forests and Pawnee National Grassland worked on 13 projects for a total acreage of 5040 acres. Rocky Mountain National Park is still burning piles as of this date with current totals of 4 burns for 209 acres.

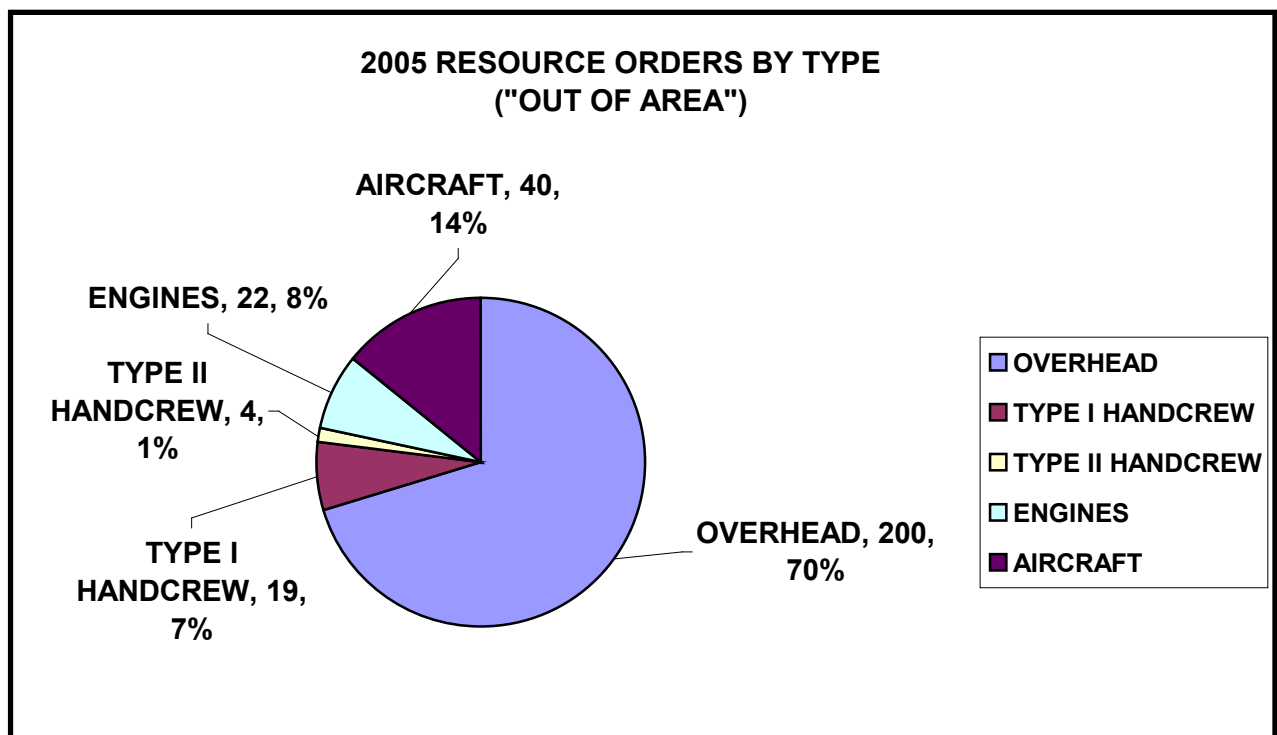
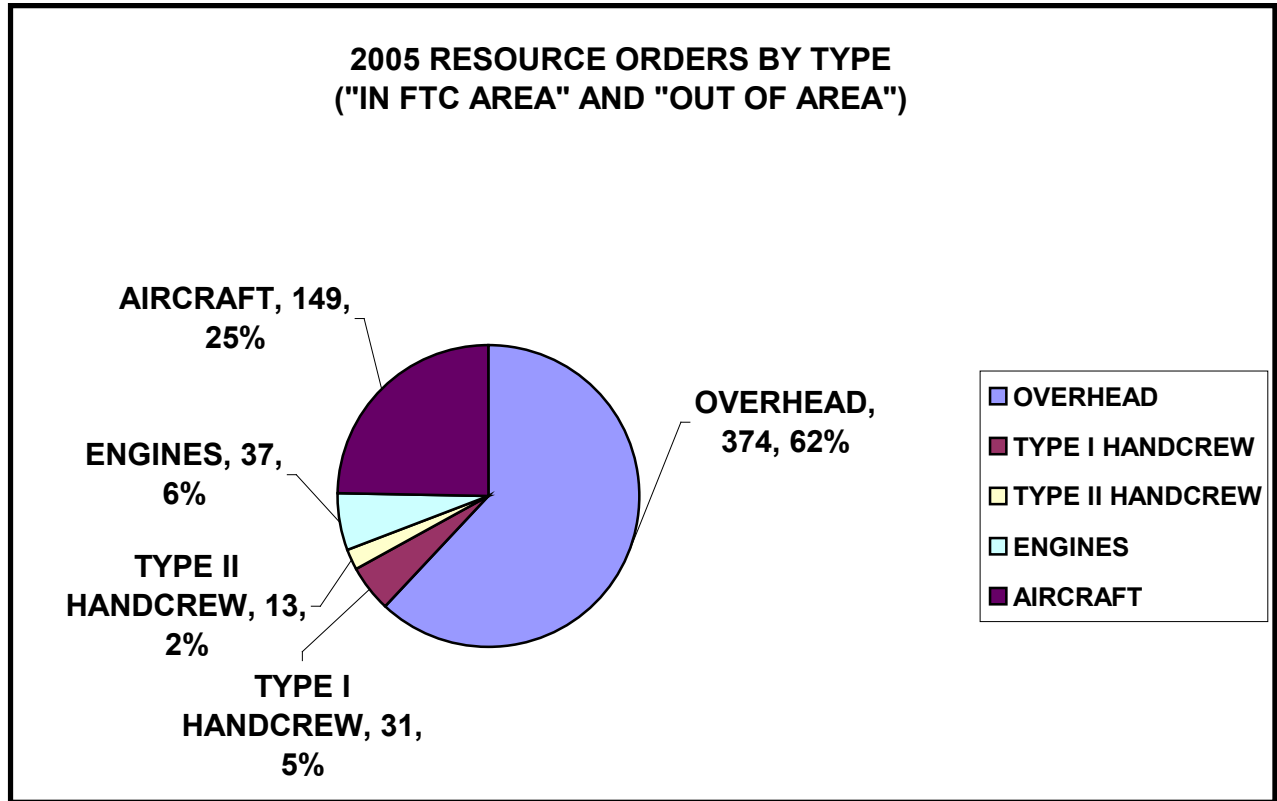




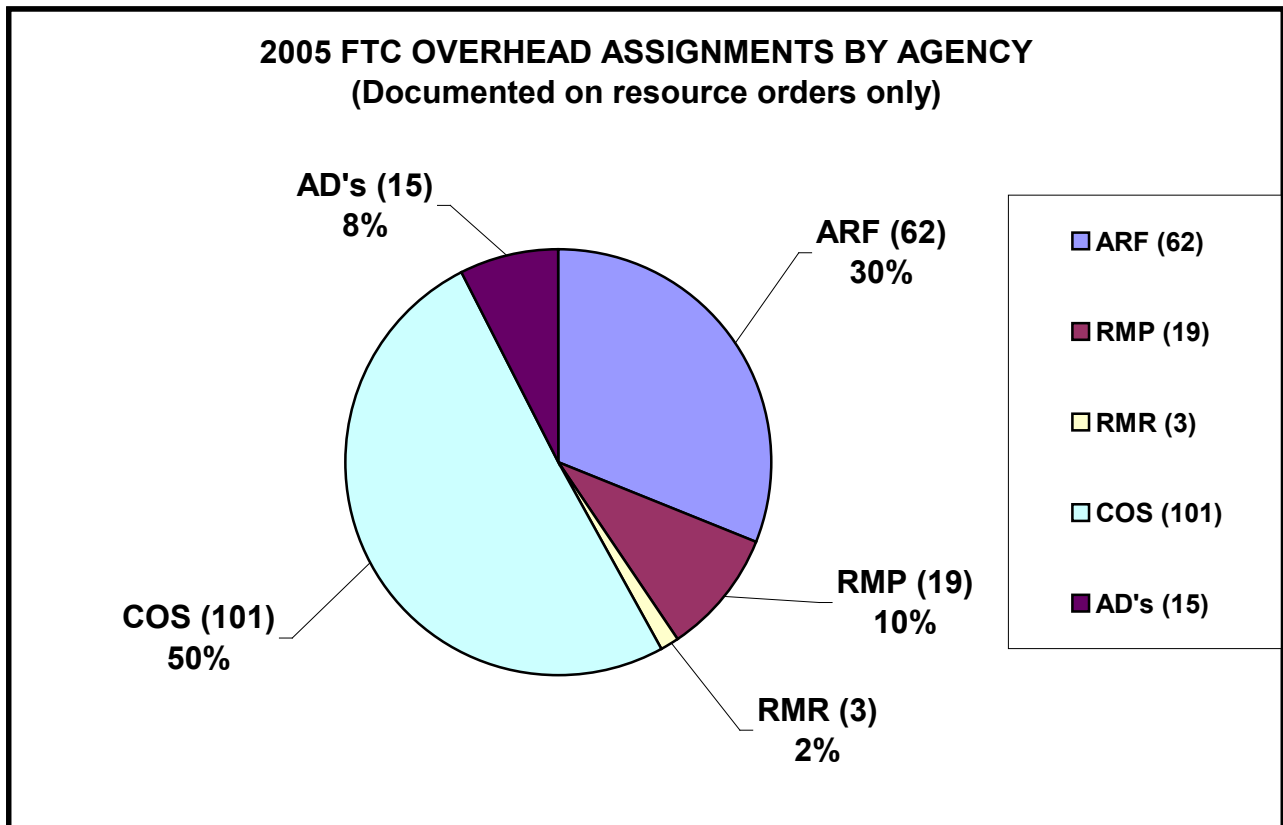
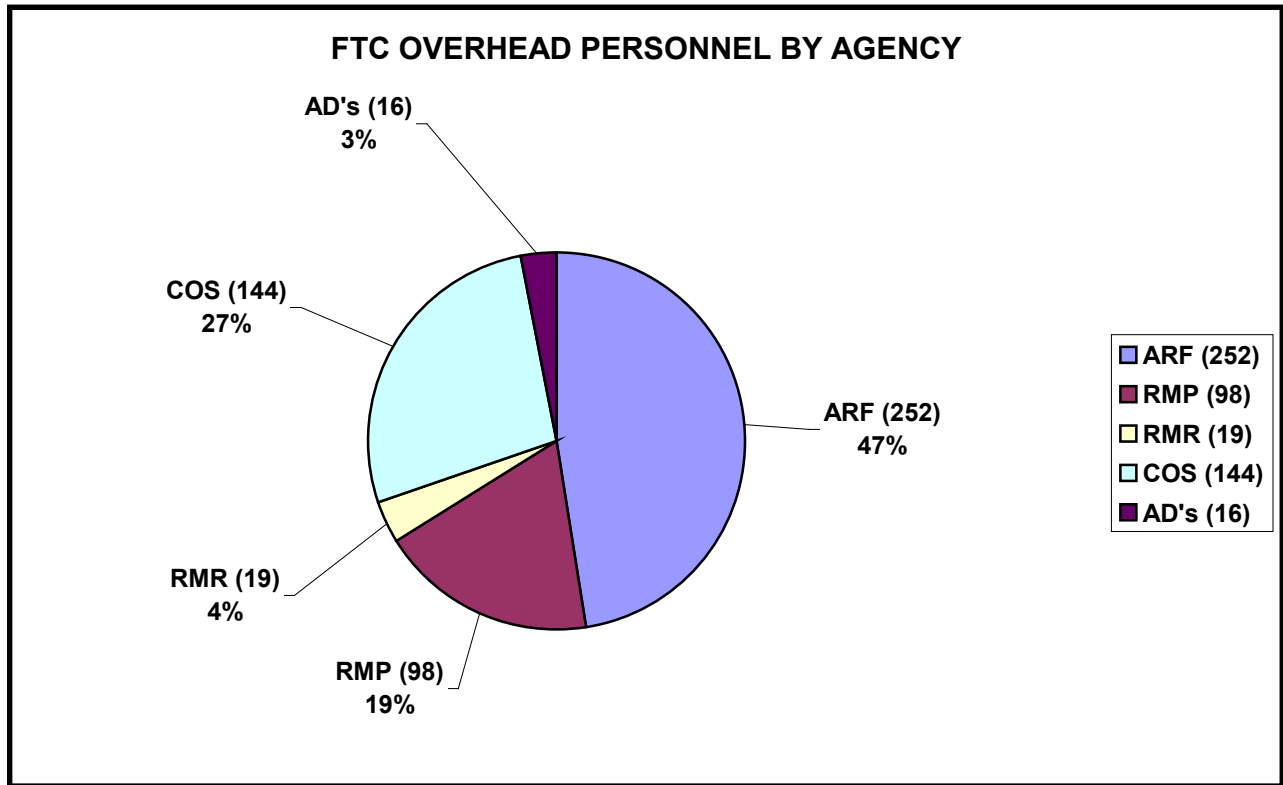
**2005 FORT COLLINS INTERAGENCY DISPATCH CENTER AND AVIATION SERVICE CENTER REPORT:**

FTC filled a total of 604 resource orders. This includes all resource orders for “in-area” and “out-of-area” assignments. *This does not include many resources that were not ordered through official channels (Local I.A.), nor does it include de-mob and reassignment orders for out-of-area resources brought into the area for project fire support.*

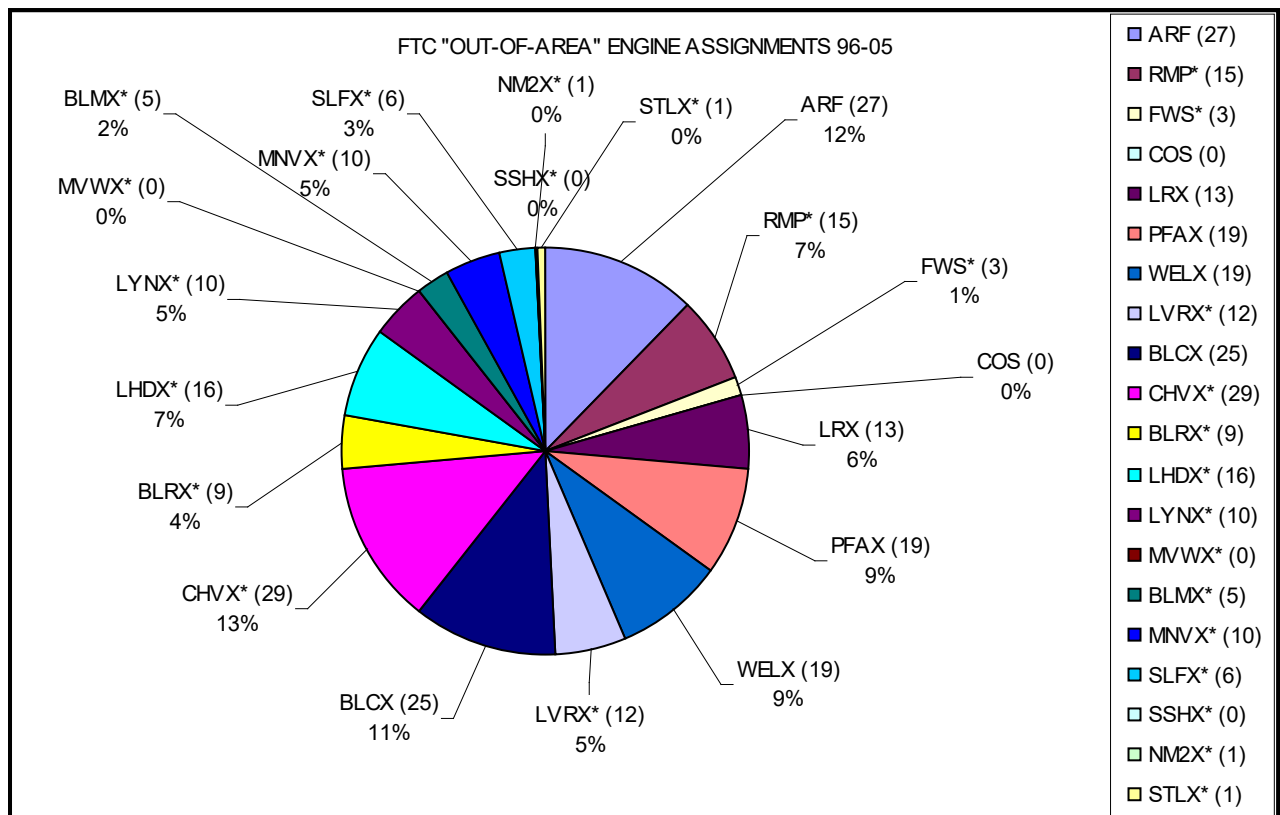
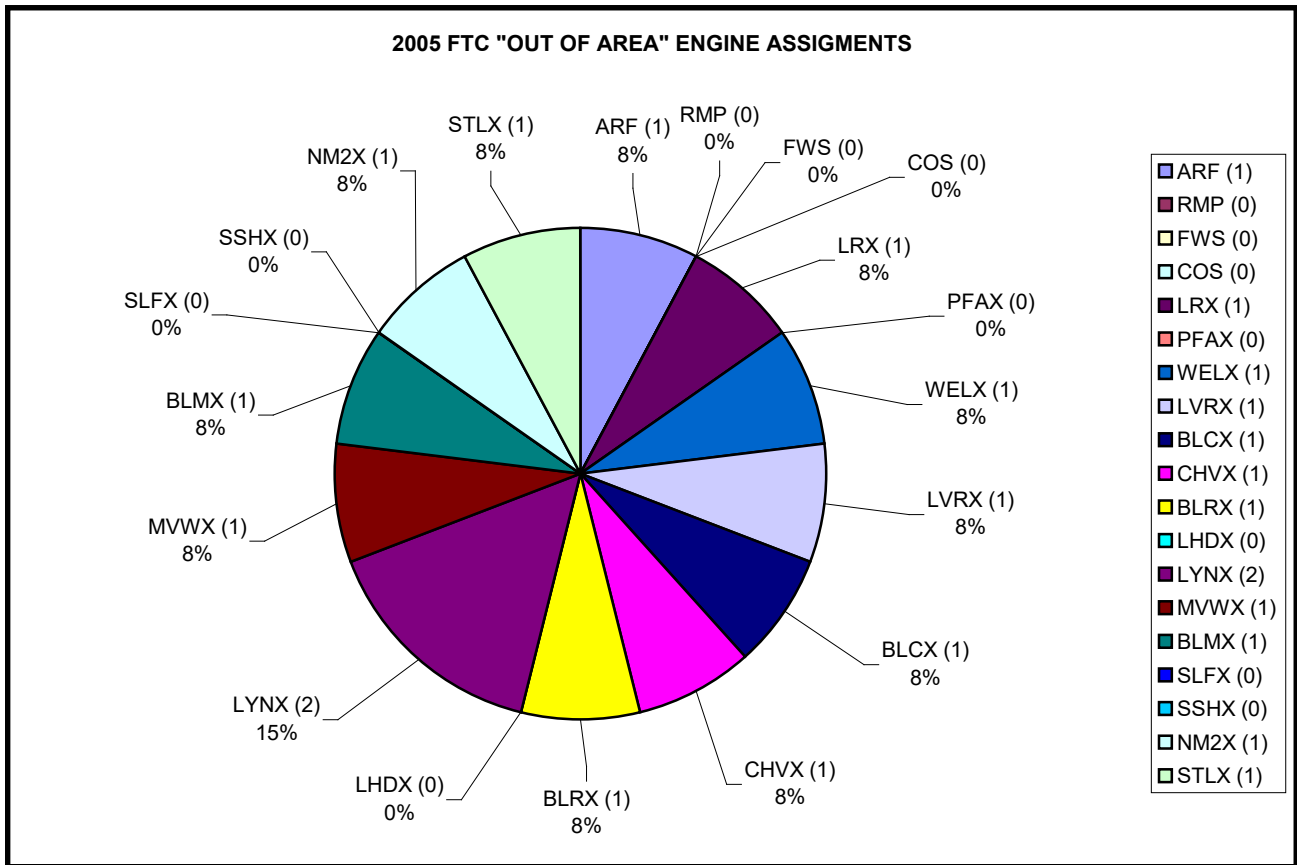
The breakdown of resource assignments by type is shown in the following chart.



The chart below shows the number of personnel assigned to incidents from each agency for 2005. The number in ( ) is the number of Overhead assignments the agency filled. The percentage of the total number of filled Overhead assignments is also denoted. Example: The Arapaho-Roosevelt N.F./Pawnee N.G. have 43% of the total number of Overhead personnel (chart #1) and filled 29% of the Overhead resource orders (chart #2). These numbers are influenced by the amount of commitment required on the home unit due to fire severity.



There were a total of 15 out-of-area wildfire incident engine assignments filled. There have been 234 total assignments from 1996 through 2005 (ten years). This does not include Severity, Pre-Suppression, or agency specific requests. The average annual number of engine assignments is 24 orders per year.

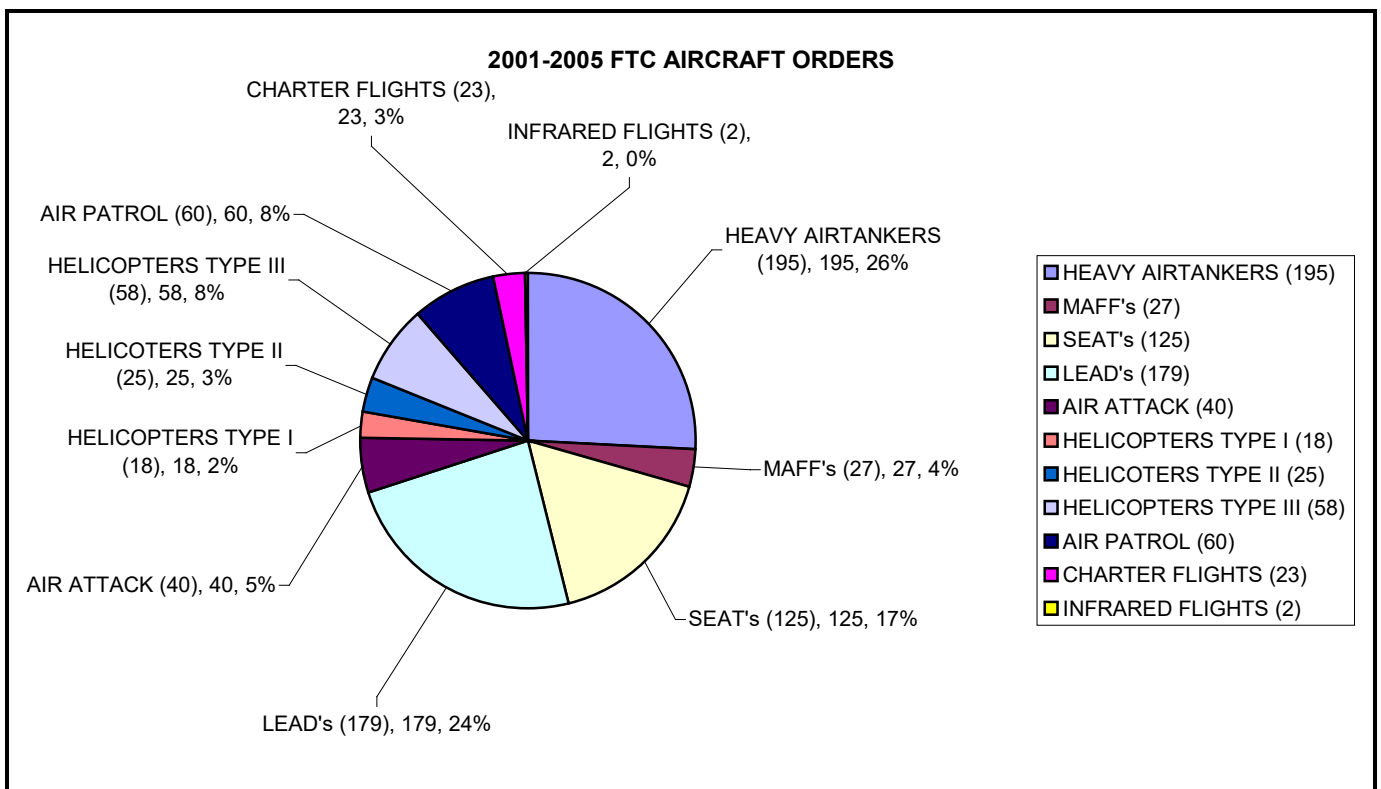
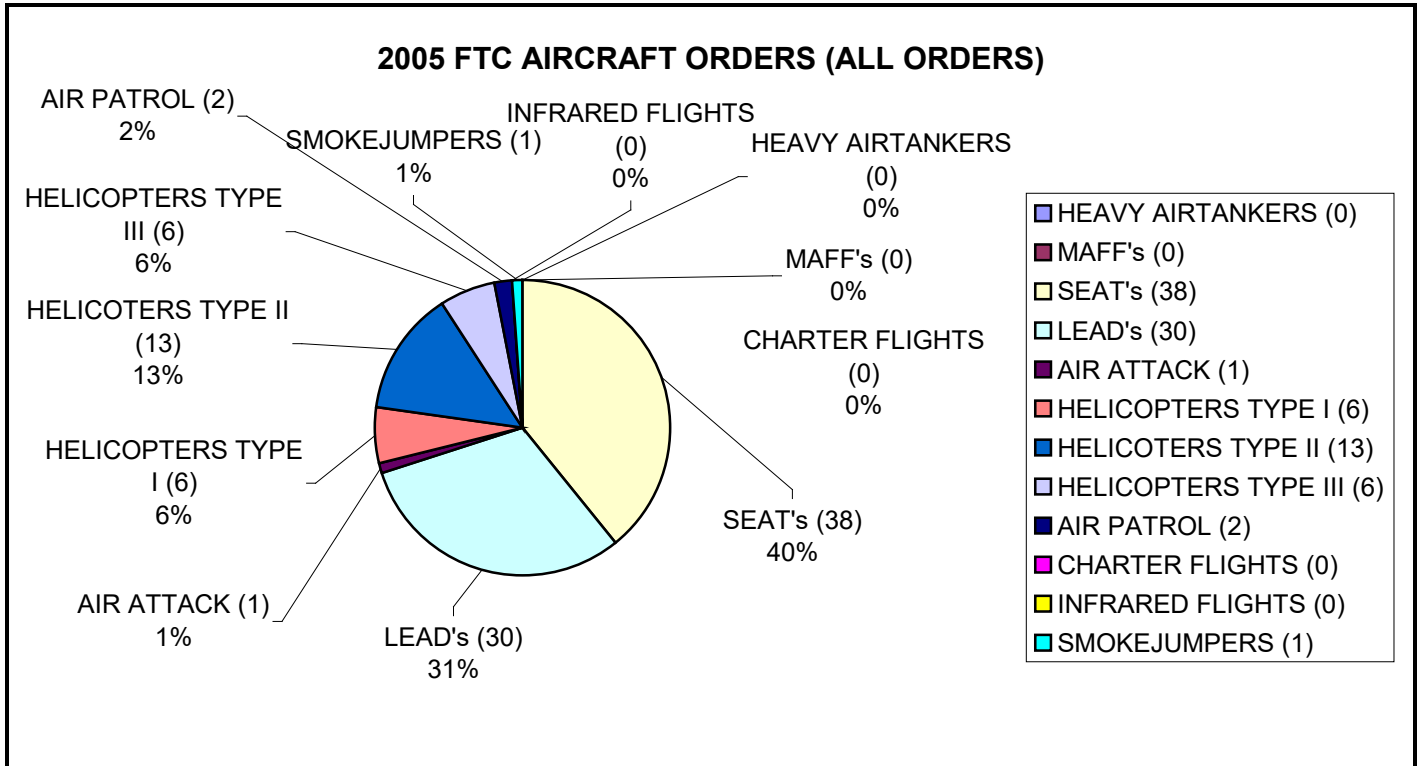


- Units that have not participated in the engine program for all ten years.

**AVIATION:**

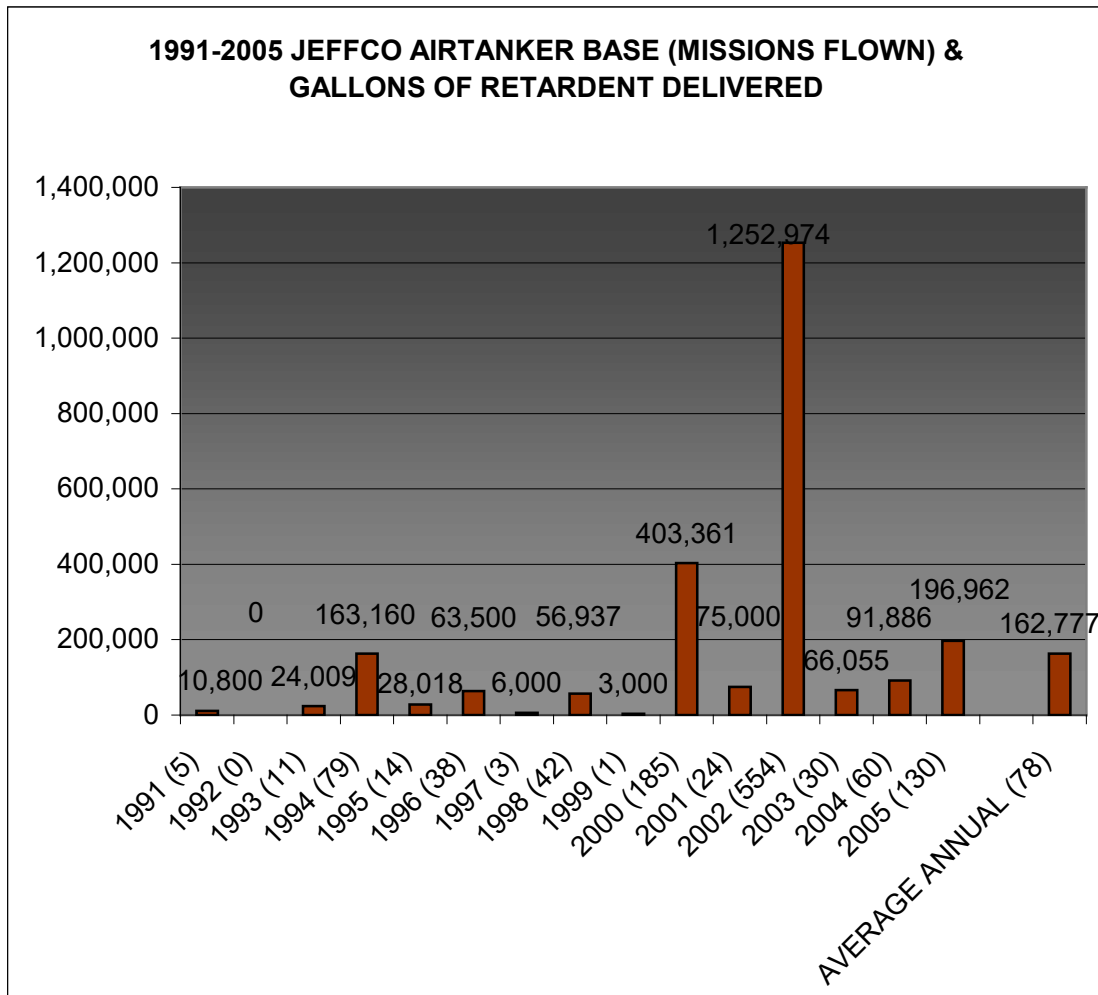
FTC processed 96 aircraft orders during the 2005 fire season. See chart below for breakdown of orders and aviation resource types.

The Redfeather Helicopter was not assigned to the ARF this year. The Boulder County Helicopter program was terminated in 2004.



## Airtanker Base

There were 130 missions flown, delivering 196,962 gallons of retardant, from the Jeffco Airtanker Base in the 2005 fire season. The 5 five year average annual numbers for the Jeffco Airtanker base are 78 missions flown per year and 162,777 gallons of retardant delivered per year.



### Key to Legend Mnemonics:

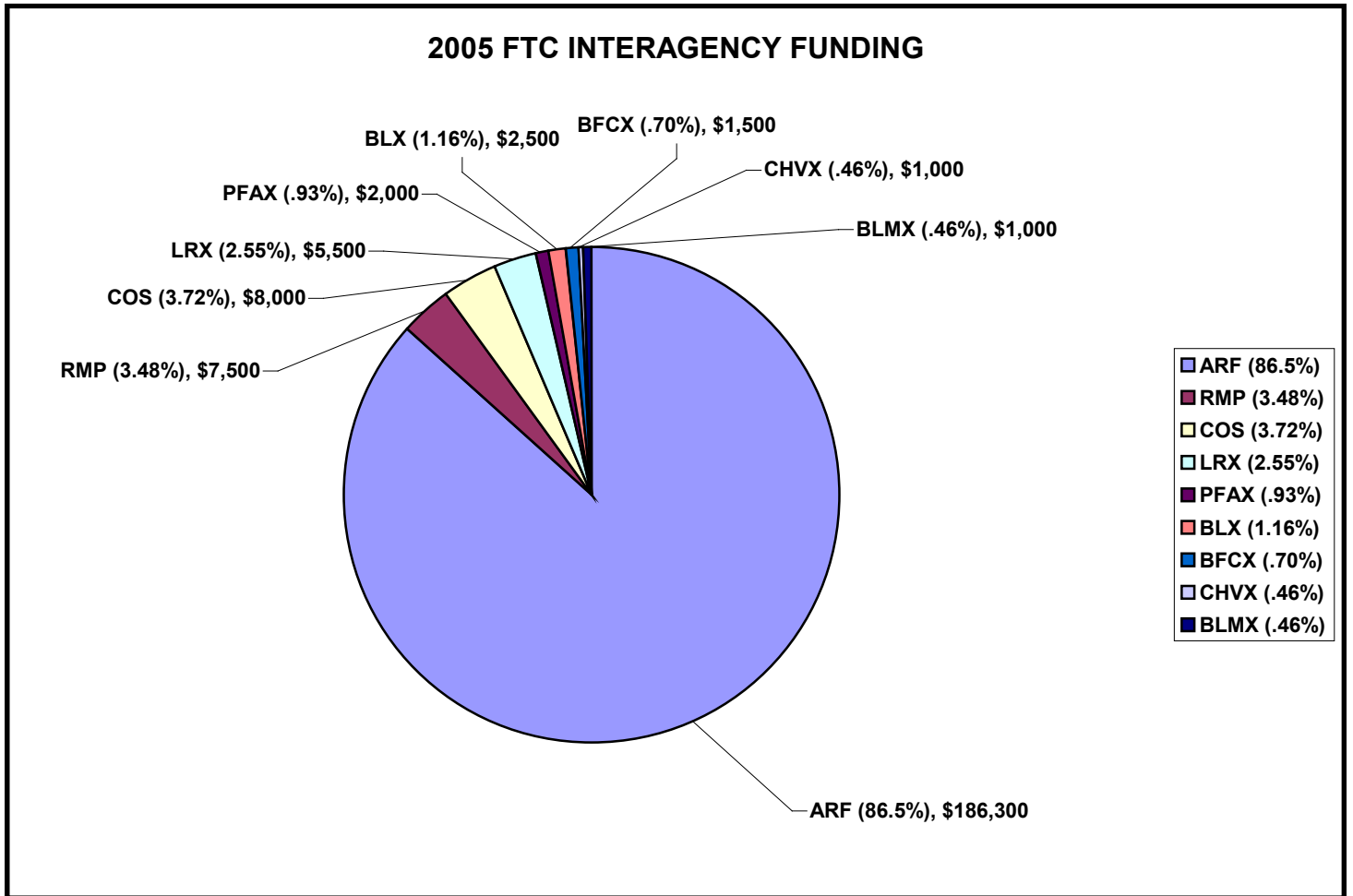
ARF	Arapaho-Roosevelt/Pawnee
RMP	Rocky Mountain National Park
RMR	Rocky Mountain Arsenal National Wildlife Refuge
COS	Colorado State Forest Service
LRX	Larimer County Sheriff's Department
BLX	Boulder County Sheriff's Department
PFA	Poudre Fire Authority
WELX	Wellington Fire Dept.
LVRX	Loveland Rural Fire Dept.
BLCX	Boulder City Fire Dept.
CHVX	Cherryvale Fire Dept.
BLRX	Boulder Rural Fire Dept.
LHDX	Lefthand Fire Dept.
LYNX	Lyon's Fire Dept.
MVWX	MountainView Fire Dept.
BLMX	Boulder Mountain Fire Dept.
SLFX	Sugarloaf Fire Dept.
NM2X	North Metro Fire Dept.
STLX	Sterling Fire Dept.

## **2006 EMPHASIS AREAS FOR FTC:**

- Recruit and fill the FTC Center Manager Position.
- Continue to review and improve dispatch operations in the new facility.
- Obtain voice recording equipment for radios (expansion capability for phones).
- Continue with integrating with Colorado State Office of Emergency Management Dispatch Operation.
- Continue to pursue “Fair Share” funding with state cooperators. (May change with future of State OEM dispatch operations.
- Continue to evaluate feasibility of WILDCAD dispatch system. Plan for 2007 set-up and implementation pending technical approvals, funding, computer networking issues and practicality.
- Implement changes to AD Hiring program and Emergency Rental Agreement system with change over to centralized procurement/contracting organization in Albuquerque, New Mexico.

## 2005 FORT COLLINS INTERAGENCY DISPATCH CENTER FUNDING:

In 2005, contributions from state cooperating agencies accounted for about 10% of FTC's annual operating funding. The CSFS contribution accounted for less than 4%.



## FUNDING SUMMARY:

Based on this general analysis a fair share funding level from the Colorado State Forest Service (in conjunction with other local agencies) is \$125,100.

- Data and information is generic and is open to interpretation. A common federal/state analysis will need to be done if all six Colorado Dispatch Centers request fair share funding.
- Fair share funding should be addressed as a statewide issue.
- The proposed funding levels will probably require Colorado funding legislation.
- Support could be in the form of monetary or staff position(s).
- State should consider being the "Collection Point" for other agencies (Counties, VFD's, etc...) that currently provide funding to the Dispatch Center(s).
- The development and integration of the State Office of Emergency Management dispatch center should be integrated with existing centers. If the state begins to mobilize state overhead, engines and aircraft the funding issue will have to be reviewed completely.

## Park Ranger Jeff Christensen

United States Department of the Interior - National Park Service

End of Watch: Friday, July 29, 2005

### Biographical Info

**Age:** 31

**Tour of Duty:** 4 years

**Ranger Number:** 233

### Incident Details

**Cause of Death:** Fall

**Date of Incident:** Friday, July 29, 2005

**Incident Location:** Colorado

Ranger Jeff Christensen died after he fell from a rugged mountain trail in the Rocky Mountain National Park's Mummy Range, near Estes Park, Colorado. He was conducting a backcountry patrol to the Lawn Lake Trailhead when the accident occurred. A search for him was started after he failed to radio dispatch that evening and when he did not arrive for his shift the following morning.

The search involved over 200 people and lasted for over one week, until Ranger Christensen's body was found by a hiker on August 6, 2005.

Ranger Christensen had served as a seasonal park ranger for 4 years. He is survived by his parents.

